

iZotope Trash Multiband Distortion for Wwise

Introduction

For those times when two distortions just won't cut it, the iZotope Trash Multiband Distortion effect for Wwise has six distortions spread across three frequency bands. This allows each of the bands to be adjusted separately allowing for different distortion effects on low, mid, and high frequency ranges. For example, a Fuzz distortion can be applied on a lower band while an overdrive distortion is used on a higher band.

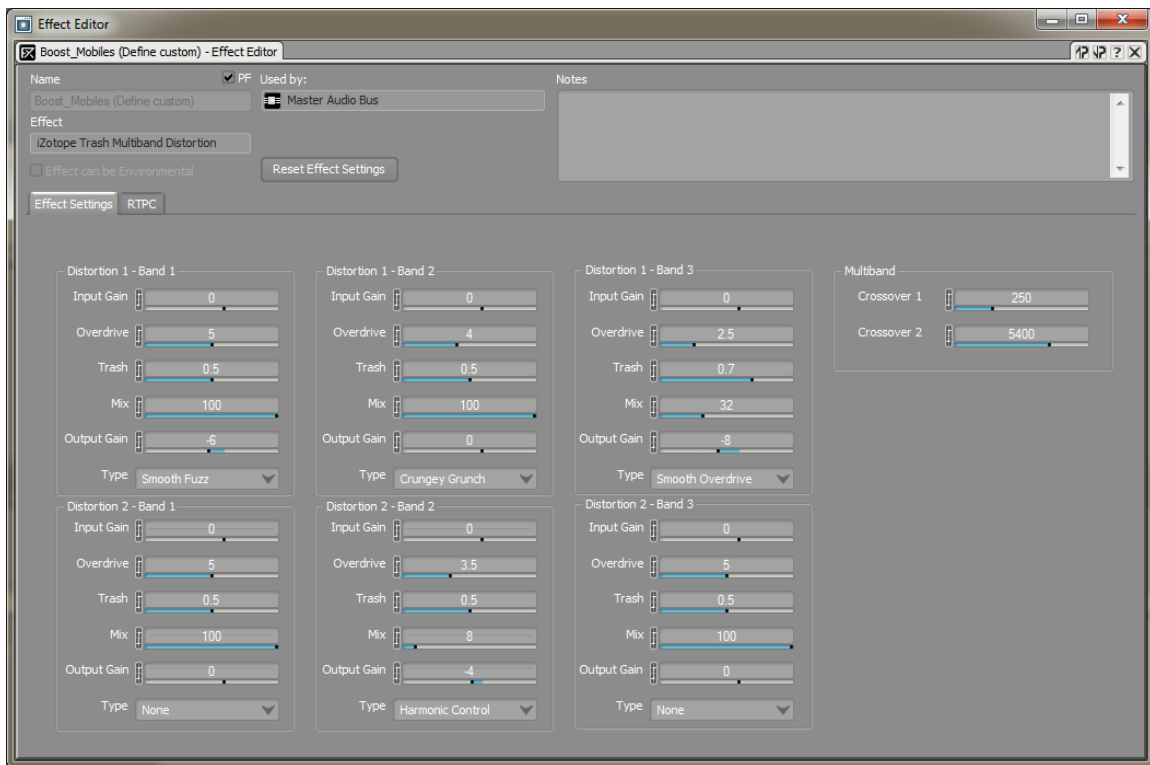


Figure 1 - iZotope Trash Multiband Distortion

Multiband Distortion

Within the Multiband Distortion effect, there are three frequency bands, each with a corresponding section in the effect controls. Each of the three sections contain all of the same parameters as the Trash Distortion effect including the ability to chain two distortions within each band.

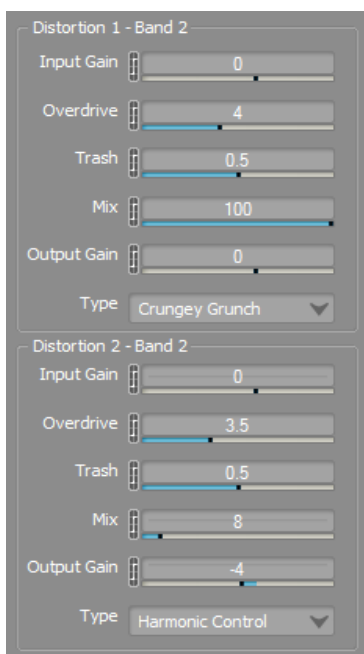


Figure 2 - Distortion Controls for Band 2

Crossover Operation

The frequency range of each band is determined by the Multiband crossover section of the effect. Using these controls, the two crossover points that determine where each band begins and ends can be set, allowing for a frequency band of any size (including zero).

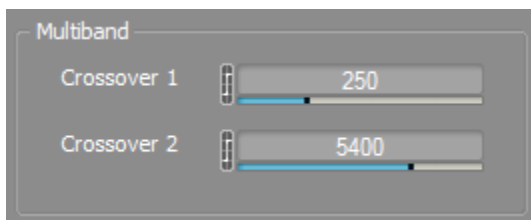


Figure 3 - Crossover Controls

Interface Element	Description
Input Gain	<p>Adjusts the Input Gain, which can be used to normalize input levels.</p> <p>Default value: 0 Range: - 30 to 20 Units: dB</p>
Overdrive	<p>Controls the amount of drive or distortion.</p> <p>Default value: 5 Range: 0 to 10 Units: None</p>
Trash	<p>Adds extra character to the sound. Increasing the Trash slider will generally “trash”, or distort the sound more.</p> <p>Default value: 0.5 Range: 0 to 1 Units: None</p>
Mix	<p>Controls the Mix between the distorted signal (100%) and original unprocessed signal (0%).</p> <p>Default value: 100 Range: 0 to 100 Units: %</p>
Output Gain	<p>Controls the gain after distortion.</p> <p>Default value: 0 Range: - 30 to 20 Units: dB</p>
Crossover 1	<p>The frequency where the low band ends and mid band begins.</p> <p>Default value: 5000 Range: 20 to 20000 Units: Hz</p>
Crossover 2	<p>The frequency where the mid band ends and high band begins.</p> <p>Default value: 10000 Range: 20 to 20000 Units: Hz</p>

Type	Selects the type of Distortion used.		
	None Amp Drainer Amperical Distropia Harmonic Control Mirror Overdrive Smooth Overdrive Straight Fuzz Ten Inch Spike Tube Drainer Smooth Fuzz Nasty Boy Wrecktifier Hard Limits Positive Fuzz Negative Fuzz	Crungey Grunch Grungey Crunch Clip Control Delicate Harmonics Squealer Hot Tin roof Blues Driver Double Stages Gentle Push Slight Twist Cold Solder Little Popper Radio Contact Elastic Trash Tape Saturation Push Pull	Mild Excitement Garage Fuzz Bit Wrench Cheap Digital Bit Aliasing Cracked Actor Cracked Actress Rubber Hammer Faulty Transistor Bad Breakup Citrus Pulp Acid Fuzz Uncontrolled Static Stomper Iron fuzz Noise Art